



51 Charles Street LORNE, VIC



4



2.5



2

## SO PRIVATE WITH NORTH FACING VIEWS

An immaculate sprawling beach home with a unique floor plan to accommodate large families or friends holidaying together.

Expansive ocean and coastline views to the north east are enjoyed throughout the two storey residence. A view from almost every room!

A solid brick and timber construction comprising 4 bedrooms, 2.5 bathrooms, light filled study (5th bedroom), 2 large living spaces and workshop.

The lower level can also be utilised as a complete self contained unit with 2 bedrooms, a bathroom and open plan living with kitchenette.

The block has dual frontage providing ample car parking and a private thoroughfare to downstairs area.

Other features include timber flooring, ducted heating/cooling, wood heater, ample storage, expansive decking and a carport.

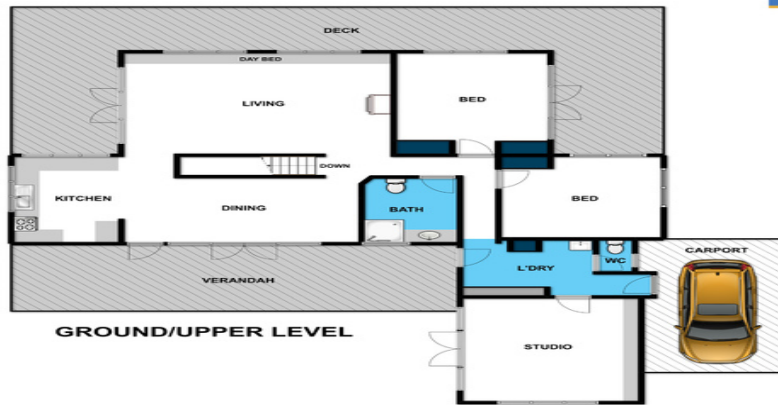
**Price:** \$1,695,000

**Michael Coutts**

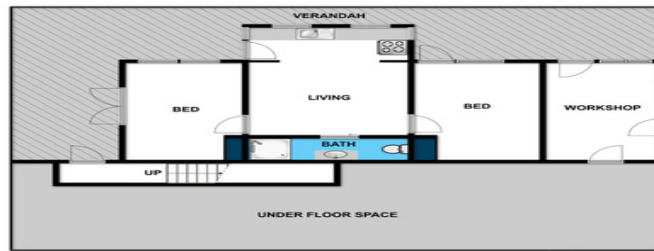
0438 356 624

**Tyrone Provan**

0405 124 799



GROUND/UPPER LEVEL



LOWER LEVEL

Whilst [bwrm.com.au](http://bwrm.com.au) has made every attempt to ensure the accuracy of the floor plan contained here, measurements are approximate and no responsibility is taken for any error, omission, or mis-statement. This plan is for illustrative purposes only.



51 Charles Street

Lorne