



11/4 Smith Street Lorne, VIC



LORNE CHALET WHEN LOCATION & QUALITY COUNT

Located in the sought after Chalet complex, one of the few double storey, 2 bedroom, 2 bathroom apartments offering coastline views.

Open plan kitchen, living, dining area is located on the 1st floor with modern kitchen, dining space and lounge which opens through sliding stacker doors to undercover balcony.

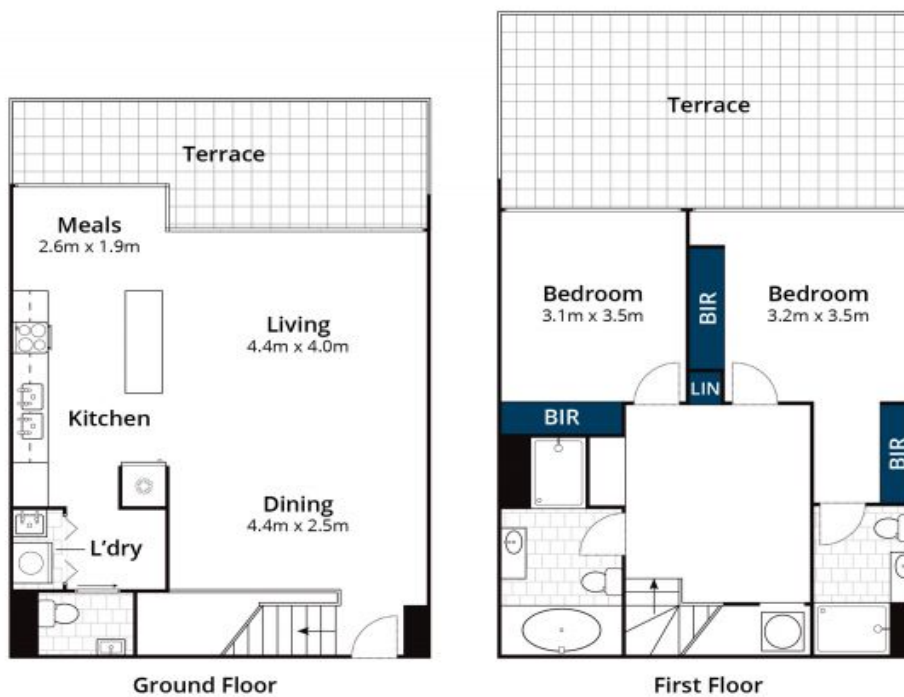
Second level offers 2 large bedrooms (master with ensuite), both opening to a huge contained terrace, 2nd living space and large bathroom.

The complex offers secure underground parking, outdoor pool, intercom system. Walking distance to the beach and shops. Being sold on a walk in walk out basis, this particular apartment is a very popular holiday rental.

Price: \$1,435,000

Michael Coutts
0438 356 624

Tyrone Provan
0405 124 799



Ground Floor

First Floor

Approx House Area 125m²

Whilst brwm.com.au has made every attempt to ensure the accuracy of the floor plan contained here, measurements are approximate and no responsibility is taken for any error, omission, or mis-statement. This plan is for illustrative purposes only.

11/4 Smith Street, Lorne