



595 Deans Marsh-Lorne Road Deans Marsh, VIC

 2  1  8

HINTERLAND HIDEAWAY

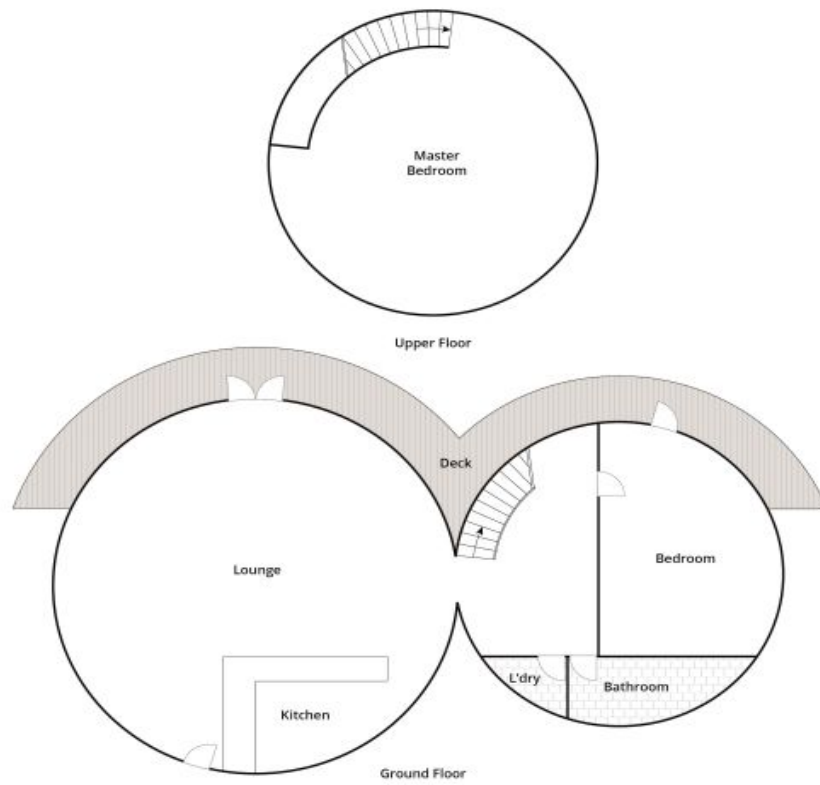
Discover a truly unique "Yurt" pavilion residence nestled on 53 acres of pristine natural forest, complete with a creek and winter waterfall. This generously proportioned property features a spacious social kitchen, a second-story main bedroom suite, and a circular living and dining area with double doors and expansive picture windows, all north-facing to capture the breathtaking elevated panoramic views across Bambra plains to Mt Gellibrand and beyond.

A rare find in a spectacular location, this property borders National Park land, ensuring privacy and tranquillity. Abundant water supply is provided by the dam and two large tanks, while approximately 3.5 acres are cleared, featuring a relatively young established orchard and vegetable garden. Just a short drive to The Deans Marsh Store and only 16 kilometres to Lorne for surfing or swimming, this property offers the perfect blend of seclusion and convenience. Ideal for bird watchers and bushwalkers, this property serves as a private retreat for all nature enthusiasts.

Price: \$999,000

Tyrone Provan
0405 124 799

Karen Stribling
0439 650 838



Whilst bwrn.com.au has made every attempt to ensure the accuracy of the floor plan contained here, measurements are approximate and no responsibility is taken for any error, omission, or mis-statement. This plan is for illustrative purposes only.

595 Deans Marsh-Lorne Road, Deans Marsh