



2/16 Charles Street Lorne, VIC



BRILLIANCE IN LOCATION AND AMENITY

A residence of the highest quality and built to exacting standards by GD Constructions. In the heart of Lorne's multi million dollar residential blue ribbon precinct. Nothing has been spared.

The prestige location is complimented by the striking Louttit Bay and coastal views that are beautifully framed by Lorne's signature blue gums.

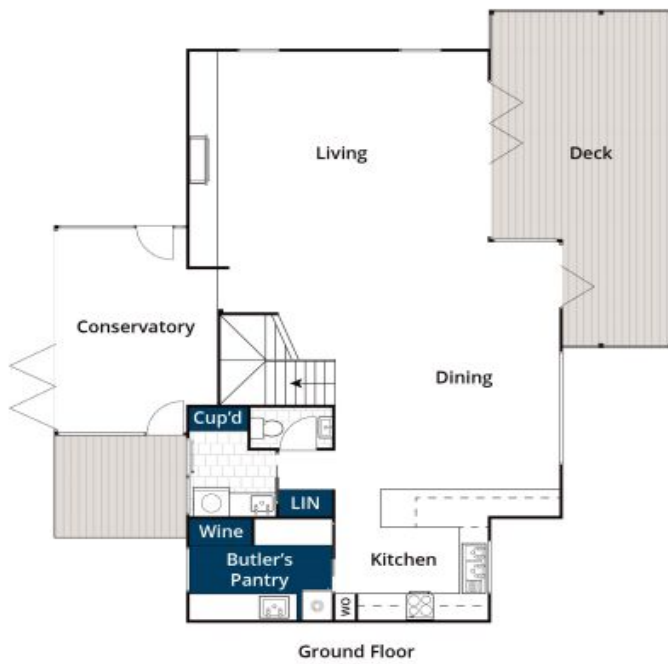
The open, brilliantly zoned kitchen/living/dining area is the centrepiece of the home and the floor to ceiling bi-fold glass doors open to bring the "outside in" and provide year round alfresco space with its large remote awning, heating and surround sound.

Three spacious bedrooms, the master suite a standout, with floor to ceiling tiles, stone and frameless opaque glass, expansive walk in robe and north facing open exposure onto the upper ocean viewing terrace.

Price: \$2,725,000

Ian Stewart
0418 522 571

Ian Stewart
0418 522 571



Whilst bwr.com.au has made every attempt to ensure the accuracy of the floor plan contained here, measurements are approximate and no responsibility is taken for any error, omission, or mis-statement. This plan is for illustrative purposes only.

2/16 Charles Street, Lorne