



165 Tuxion Road Apollo Bay, VIC

 10  7  9

POINT OF VIEW VILLAS AND HOMESTEAD

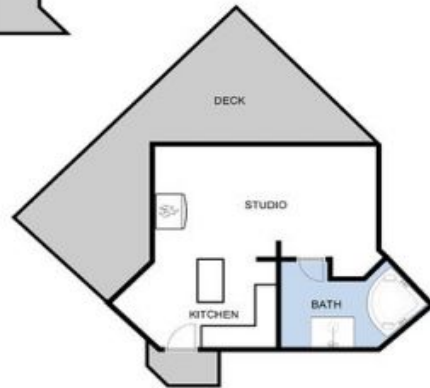
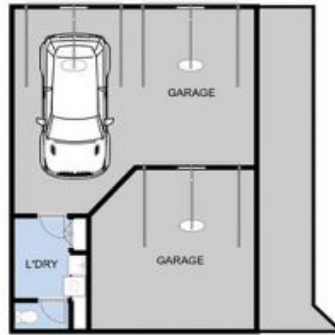
This stunning 20-Acre estate comprises a large family home and established luxury rental villas overlooking Apollo Bay. The main residence is a five-bedroom, two-bathroom home designed by renowned architect John Pizzey, alongside five luxury rental villas known as Point of View Villas. Offering panoramic views across the hills and Apollo Bay, this estate perfectly blends exceptional living with a successful luxury accommodation business.

The main home exudes elegance with quality furnishings and large expanses of windows framing magnificent views. With generous robed bedrooms and stunning newly renovated bathrooms, the home is sure to delight. The spacious open living areas enjoy the warmth of a central wood fire creating a cozy and inviting atmosphere. The adjacent kitchen offers ample storage and quality appliances that make meal preparation a pleasure. The home also features a second central living area perfect for larger families. Outdoor amenities include a four-car garage, extensive additional parking, an established vegetable garden, beautiful

Price: \$5,500,000 to \$6,000,000

Darren Brimacombe
0418 317 424

Kirsten Body
0457 899 941



DISCLAIMER: PLEASE NOTE PLANS ARE INDICATIVE ONLY AND NOT DRAWN TO EXACT SCALE. ALL DIMENSIONS ARE APPROXIMATE. POTENTIAL BUYERS SHOULD VIEW THE PROPERTY IN PERSON.